

Sample Boards 2017

LAST UPDATED: 25-01-2021

DEMO



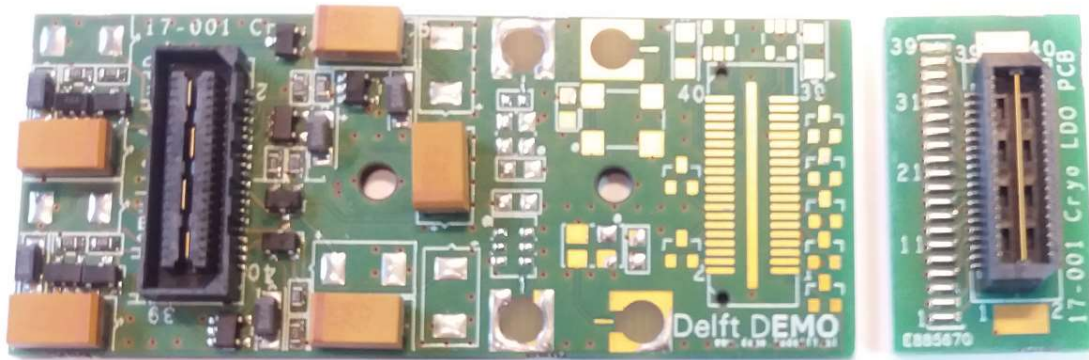
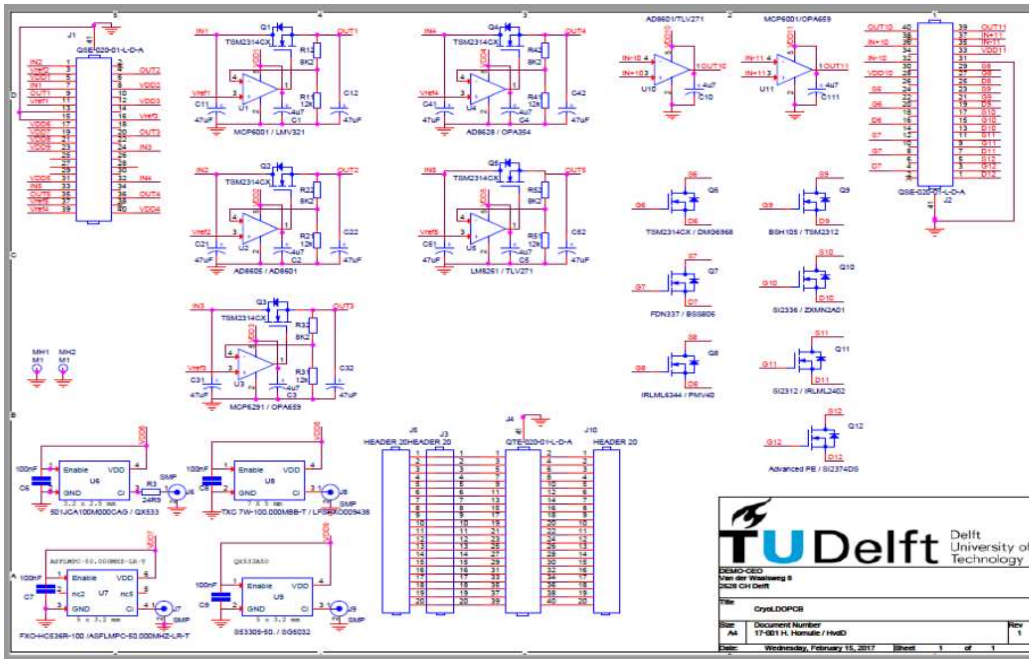
Sample Boards

17-001 Sample board Homulle.....	3
17-002 TestPCB FFCFilter board	4
17-004 FFC_Y_PCB.....	5
17-005 FFC_dipstick_PCB.....	6
Interface	6
17-006 Sample board Zheng	7
Sample Board.....	7
17-009 Controller for Cryo-positioner	9
17-010 Sample board Philips	10
17-012 RCL resonator PCB	11
17-013 microD25_FFC_PCB	12
17-014 AOM-SUM	13
17-015 Sample board Zheng	14
17-016 Cryomux	15
17-018 FFC35_FFC50 flex.....	16
17-019 FFC50_nanoD flex.....	17
17-020 Sample board Cryomux Lareine Yeoh.....	18
17-022 Uni Sample PCB 23 gate.....	19
17-023 Fischer24-FFC	20
17-24 RC filter Nico Box.....	21
17-028 RC-Cu filter Andrea Corna.....	22
17-030 3FFC50-6MicroD Andrea Corna	23
17-031 FFC50-FFC50 Flexen	24

17-001 Sample board Homulle

Sample Board

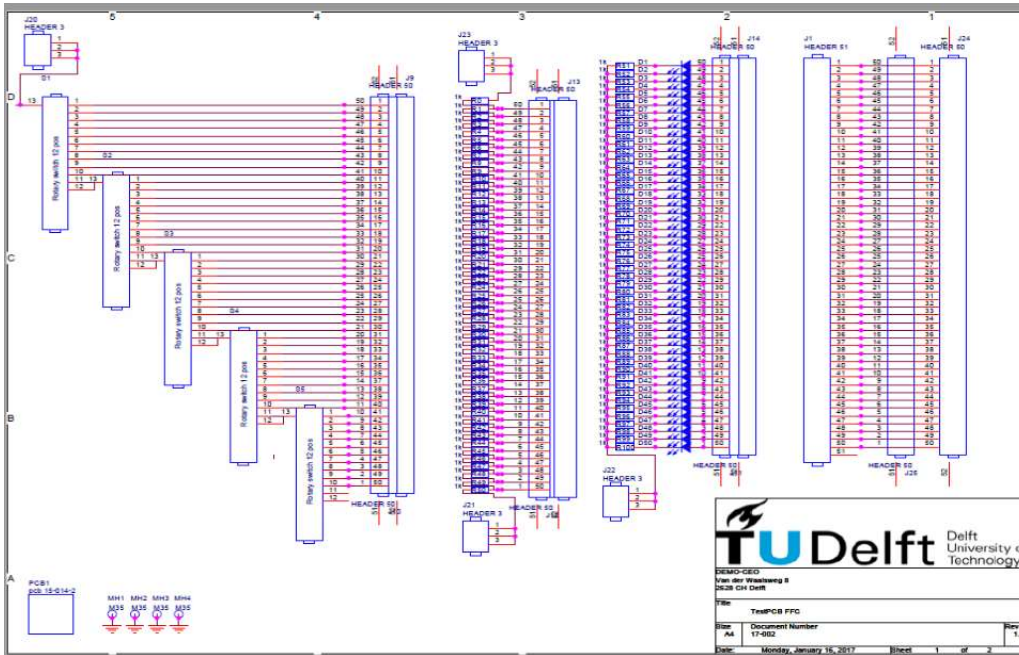
size (LxWxT): 88.6 x 30 x ? mm



17-002 TestPCB FFC

Contact test board

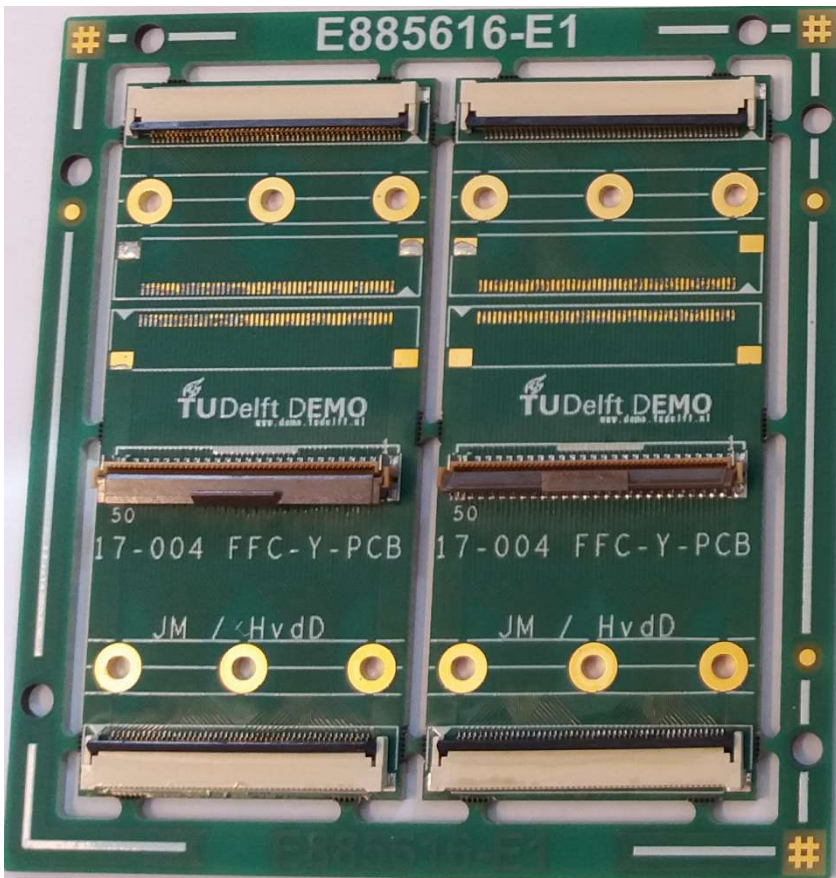
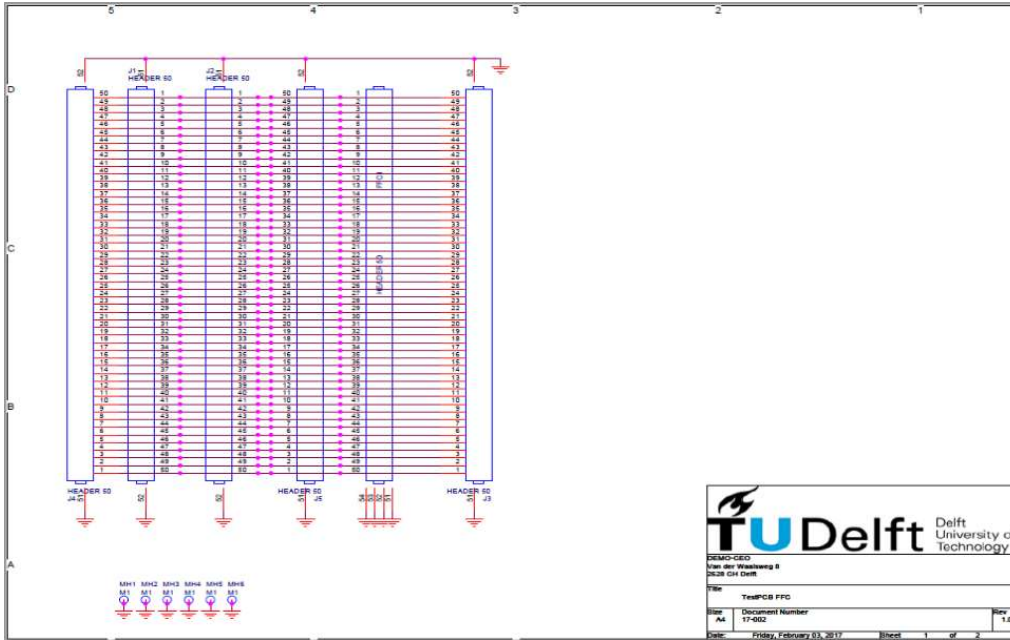
size (LxWxT): 146.8 x 65.9 x ? mm



17-004 FFC_Y_PCB

Interface

size (LxWxT): 67.6 x 30 x ? mm

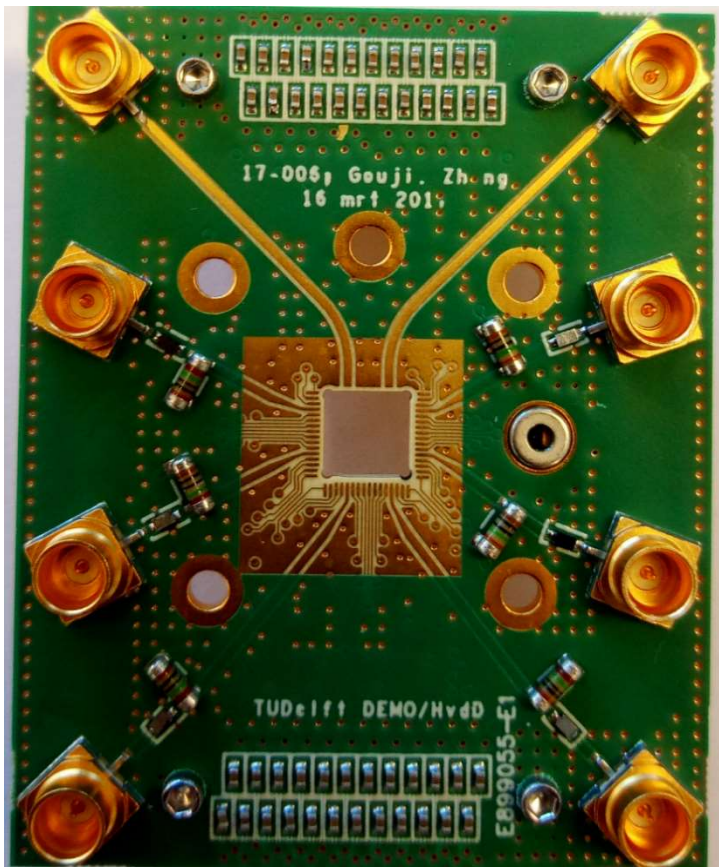
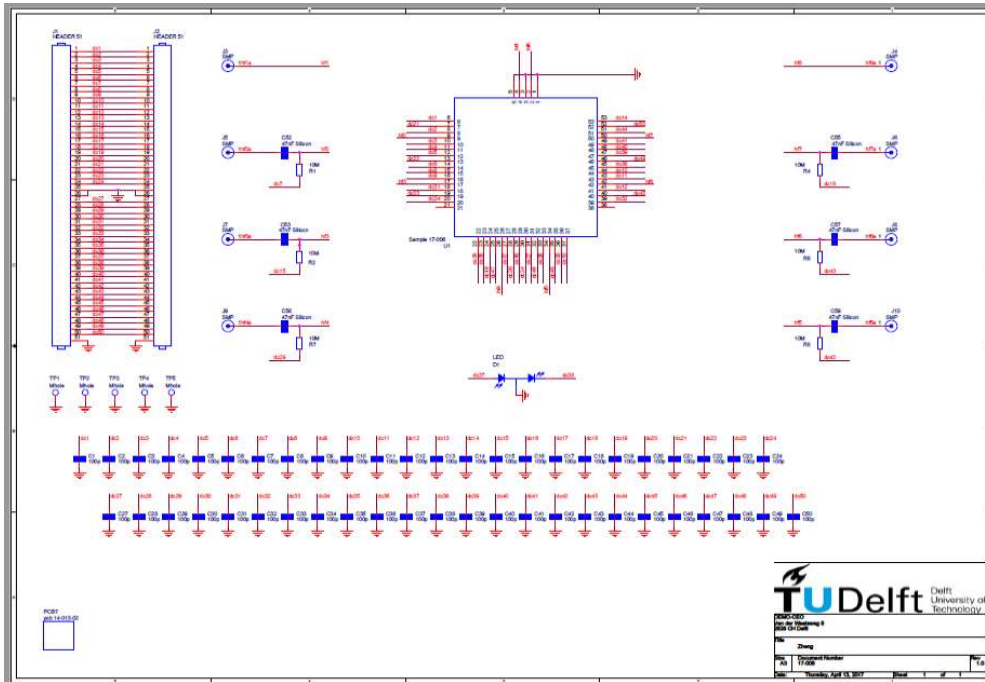


17-006 Sample board Zheng

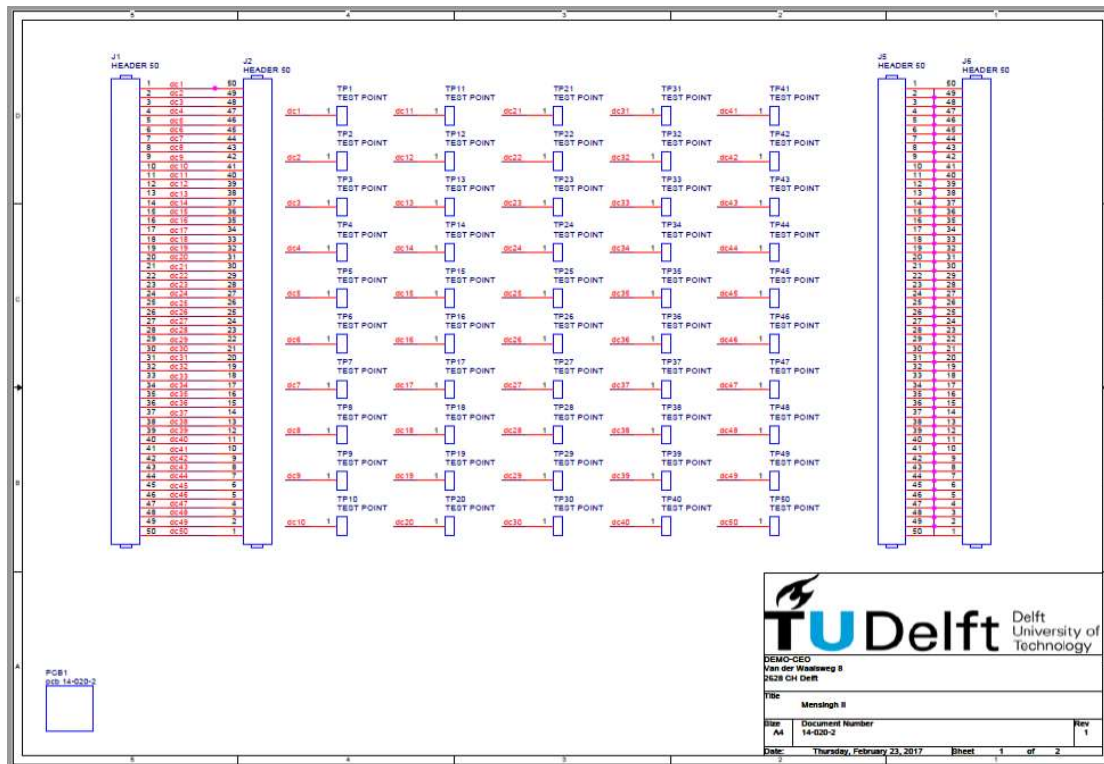
Sample Board

size (LxWxT): 50 x 40 x ? mm

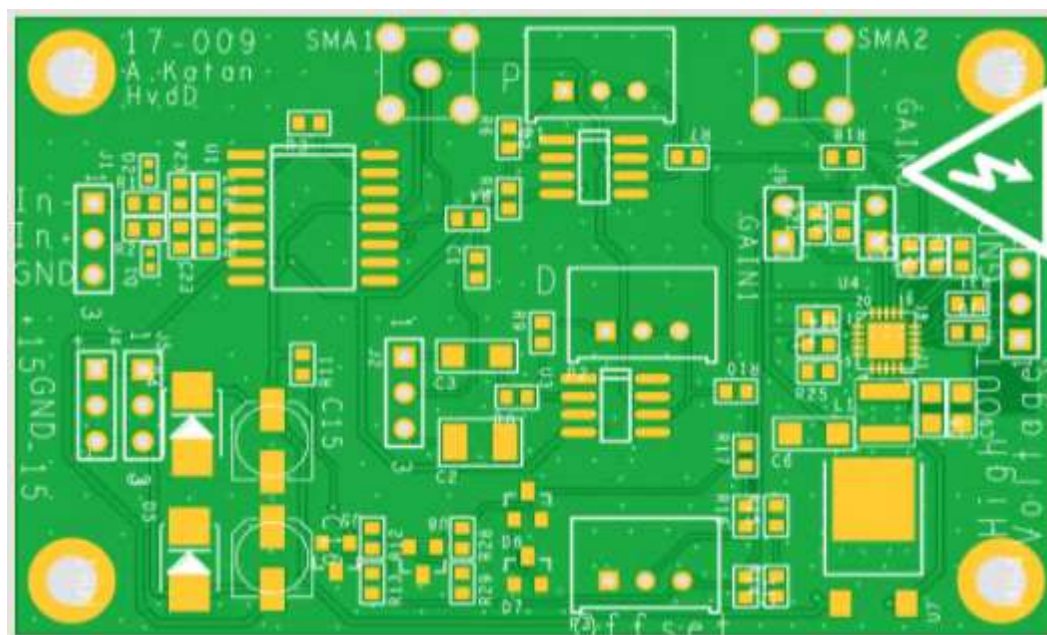
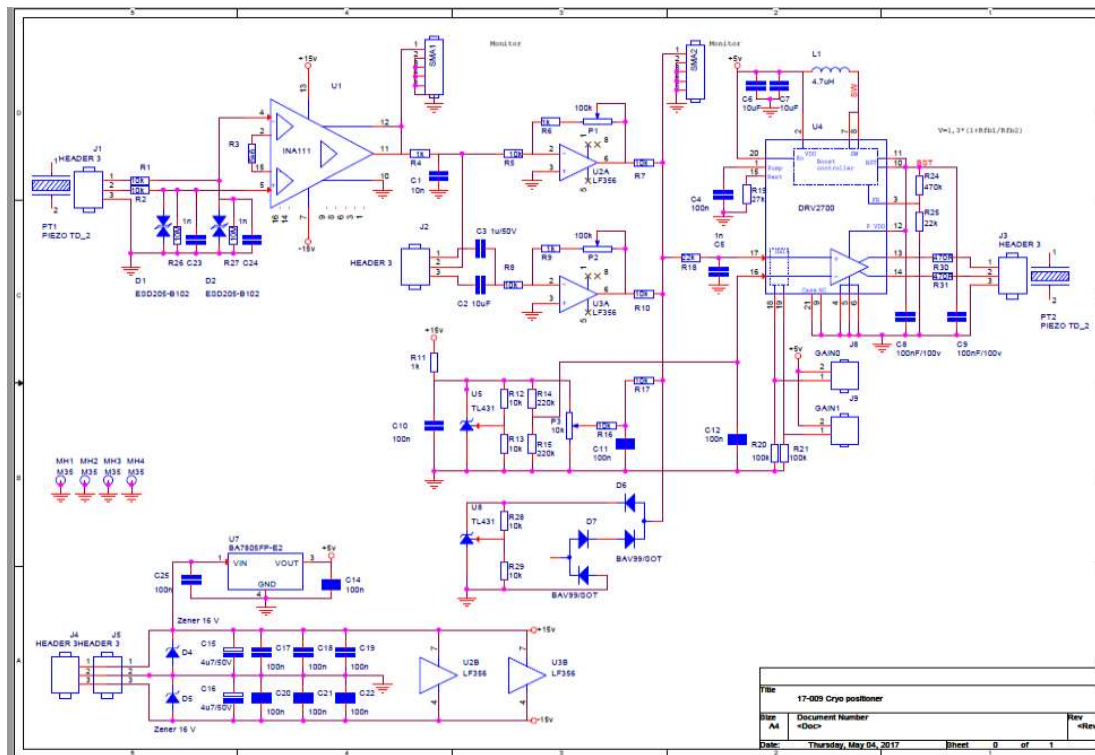
Sample Hole: 5 x 5 mm



17-007 FFC connector



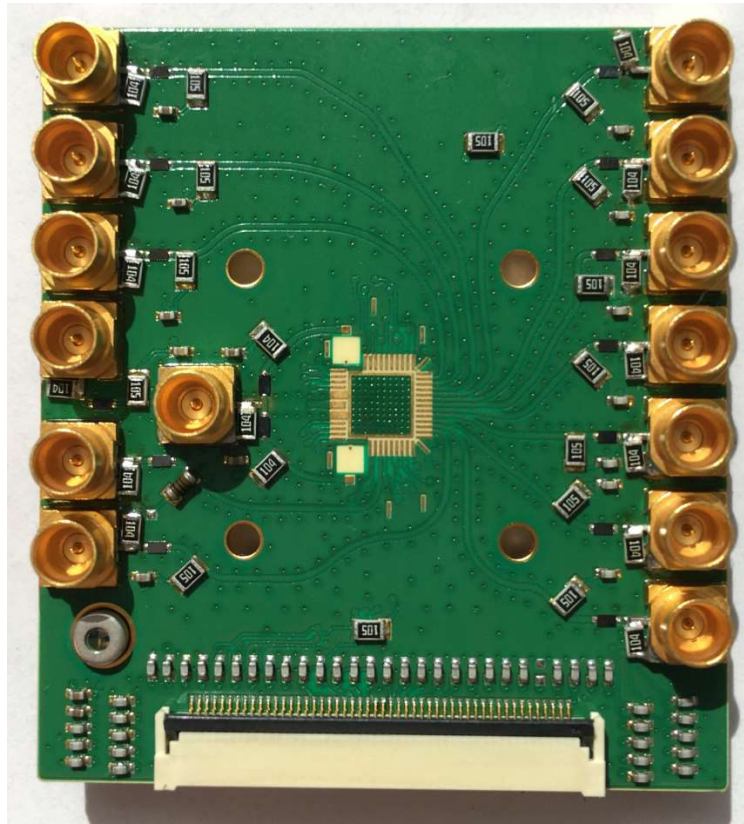
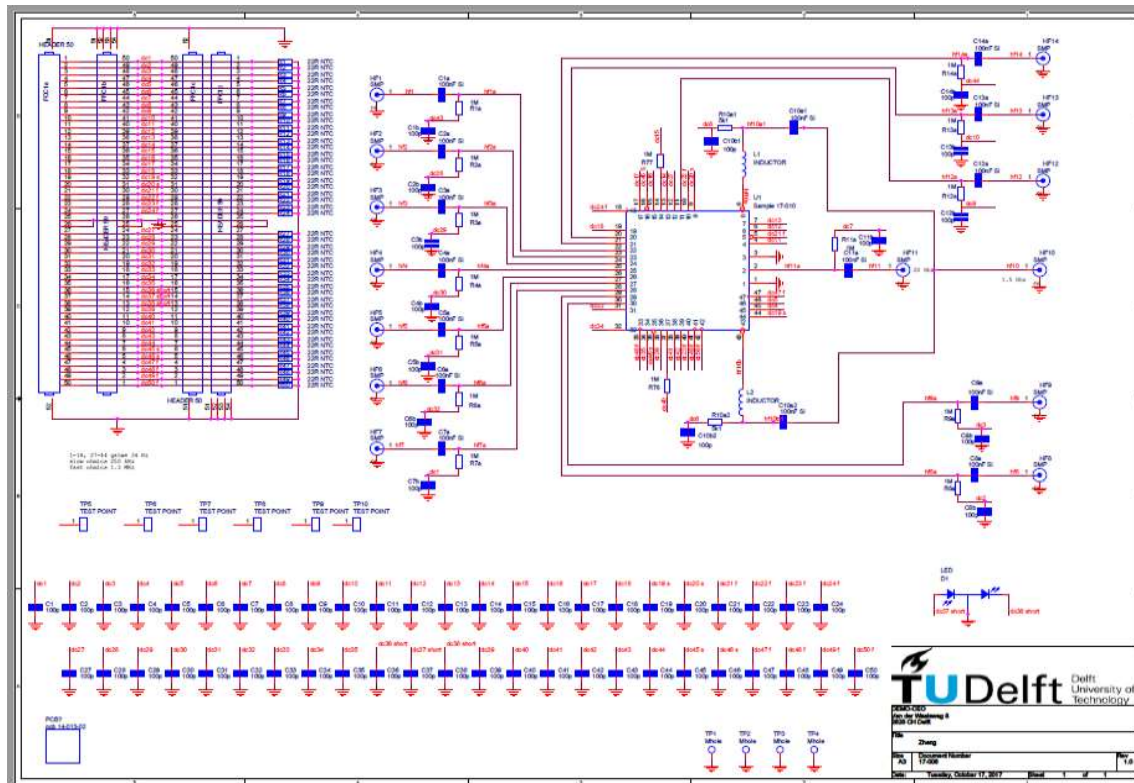
17-009 Controller for Cryo-positioner



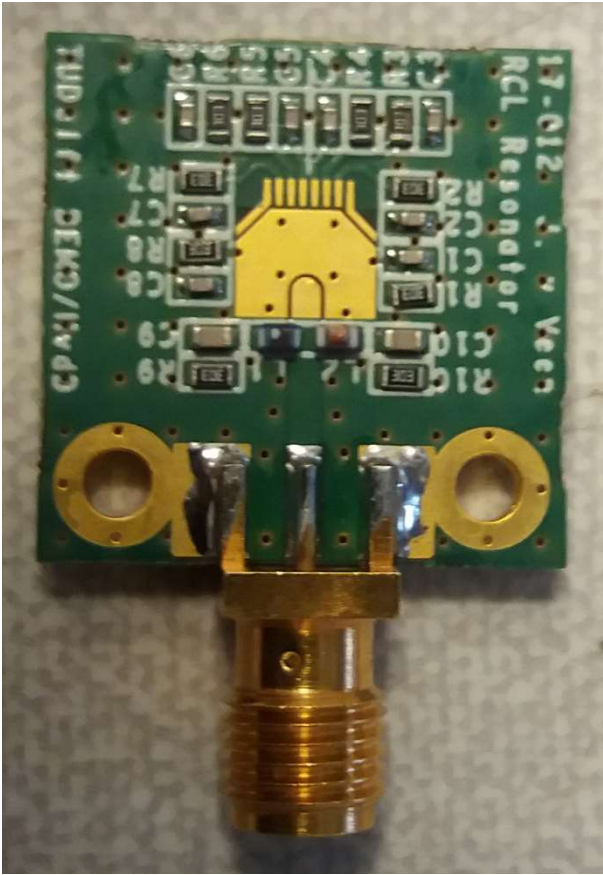
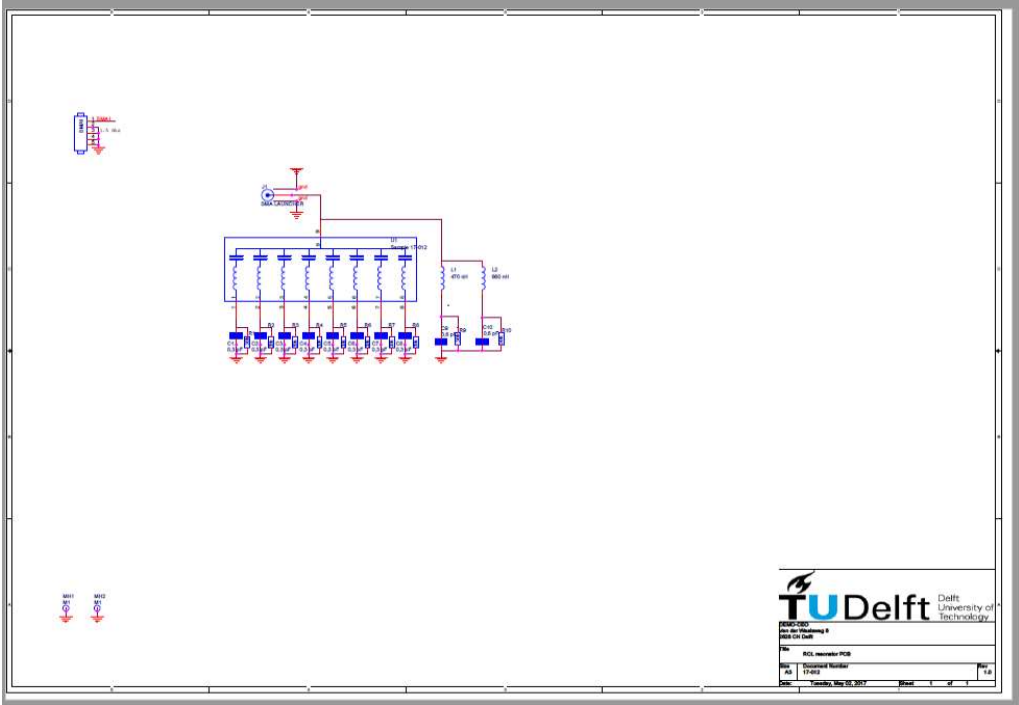
17-010 Sample board Philips

Sample Board

size (LxWxT): 50 x 45 x ? mm

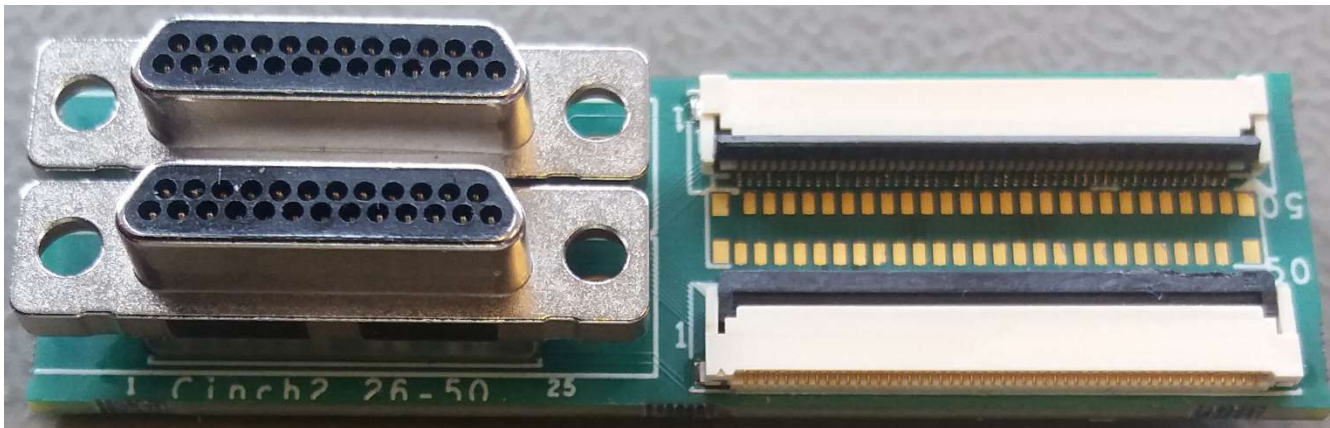
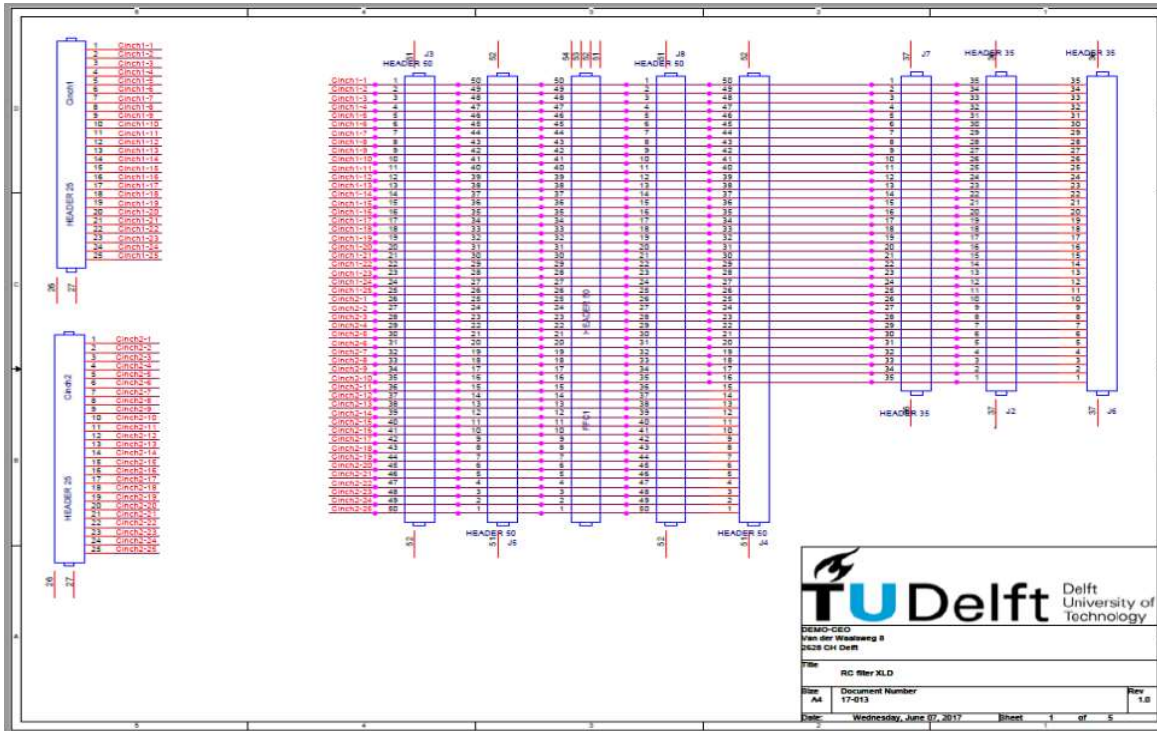


17-012 RCL resonator PCB

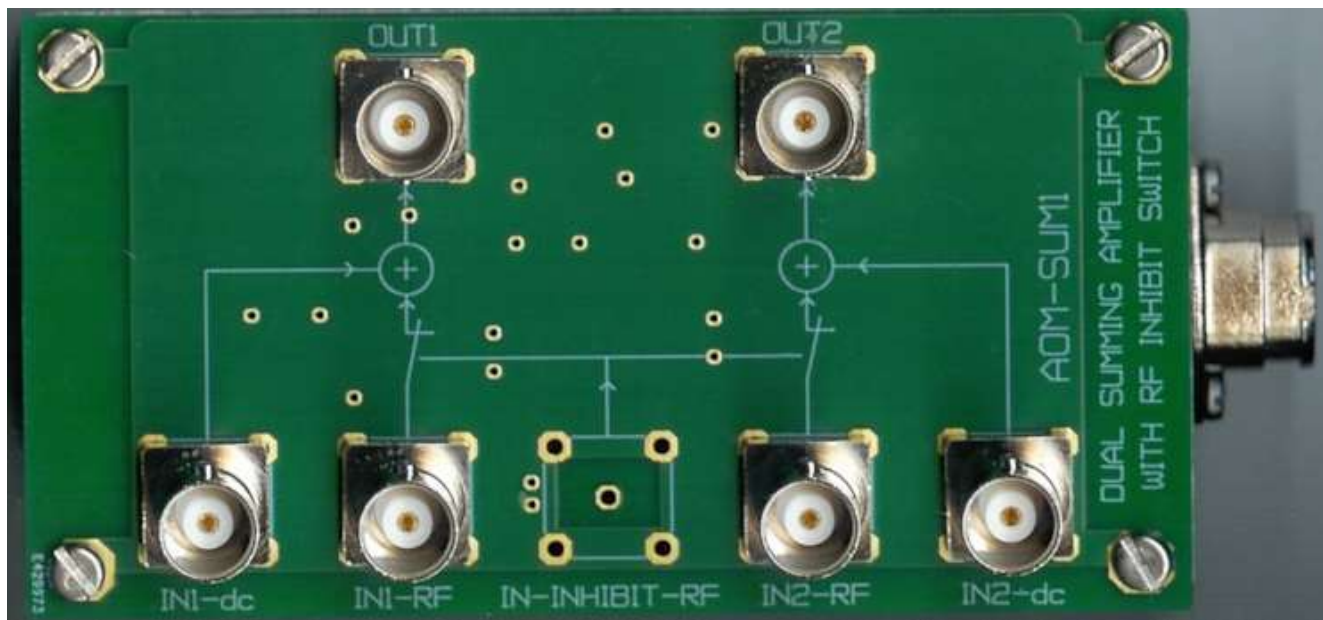
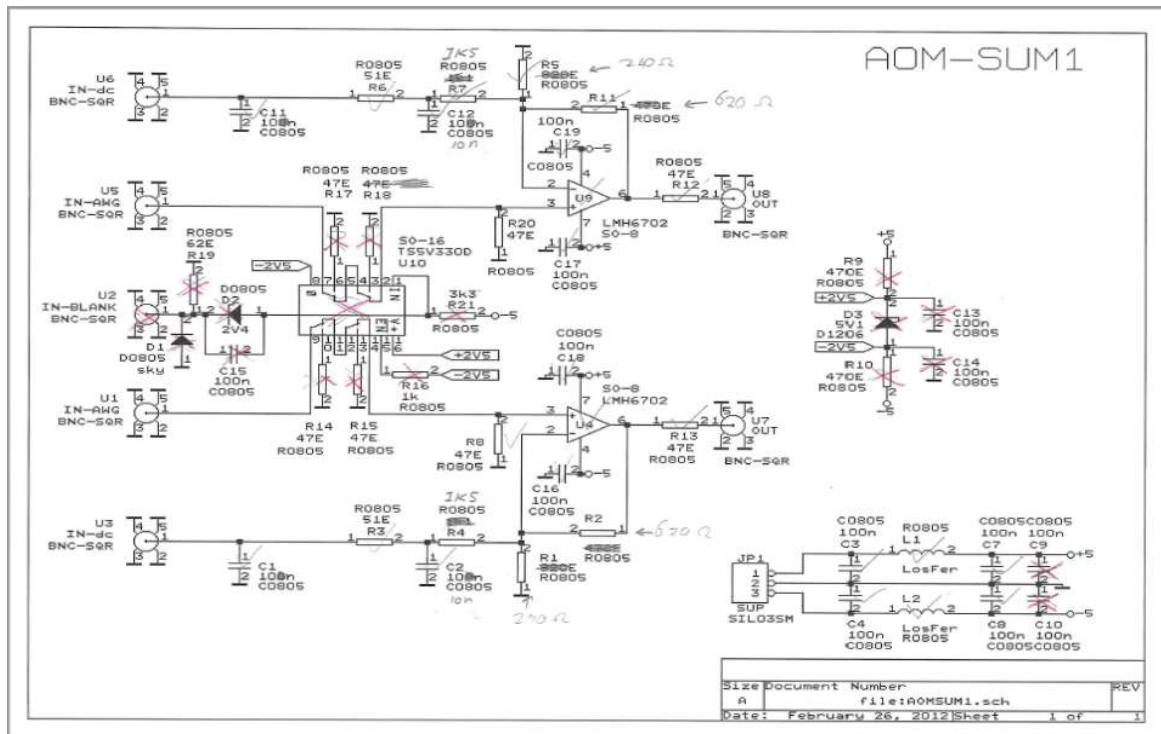


17-013 microD25_FFC_PCB

Interface

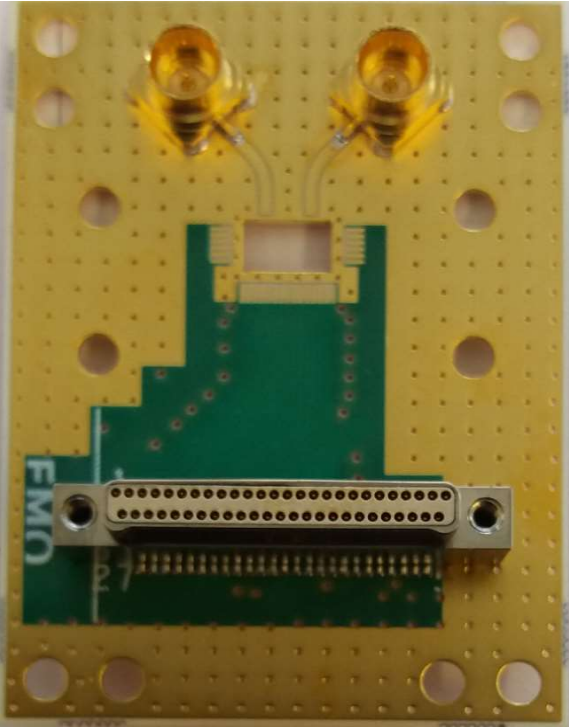
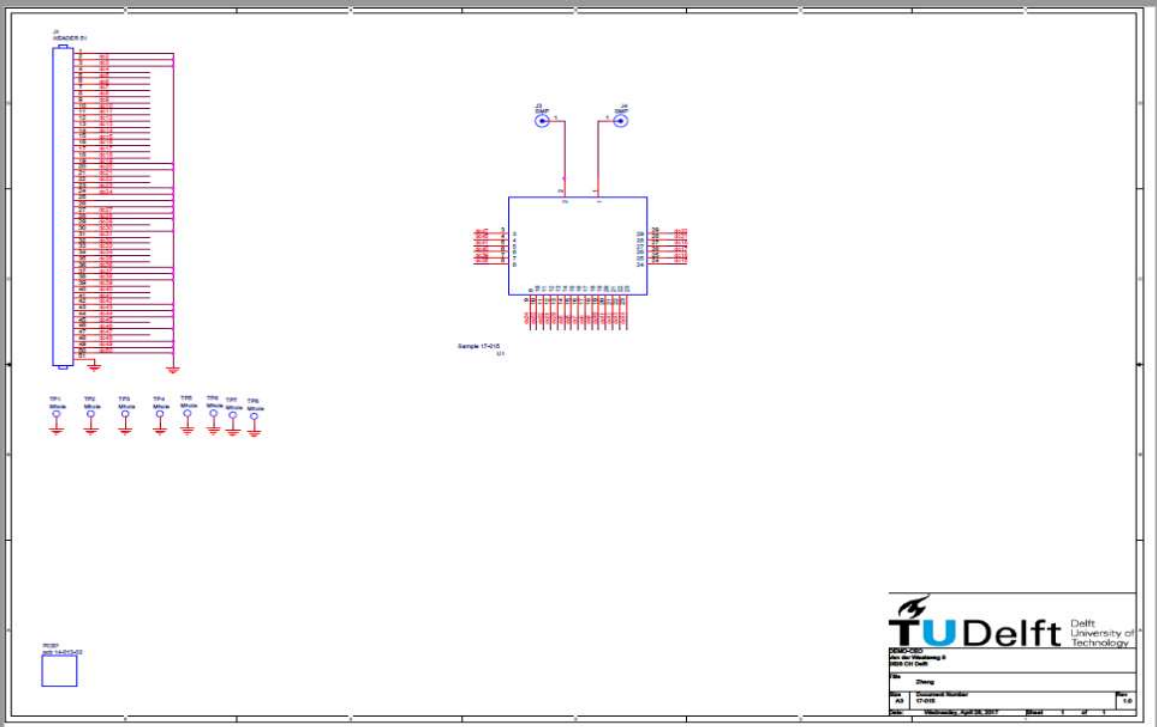


17-014 AOM-SUM



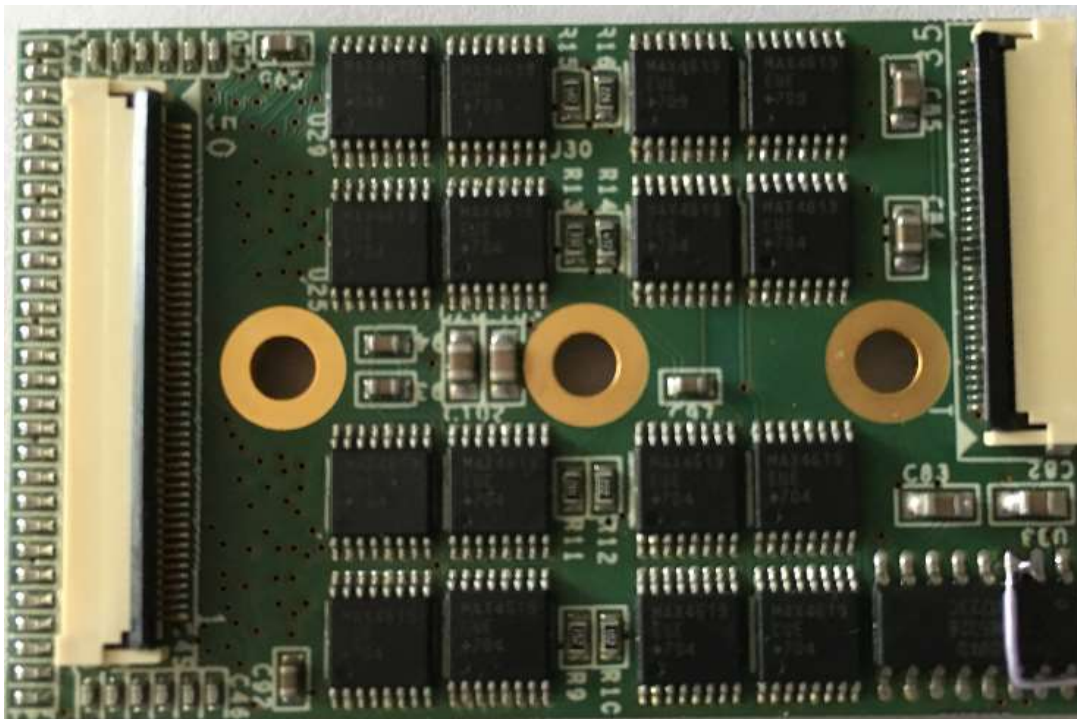
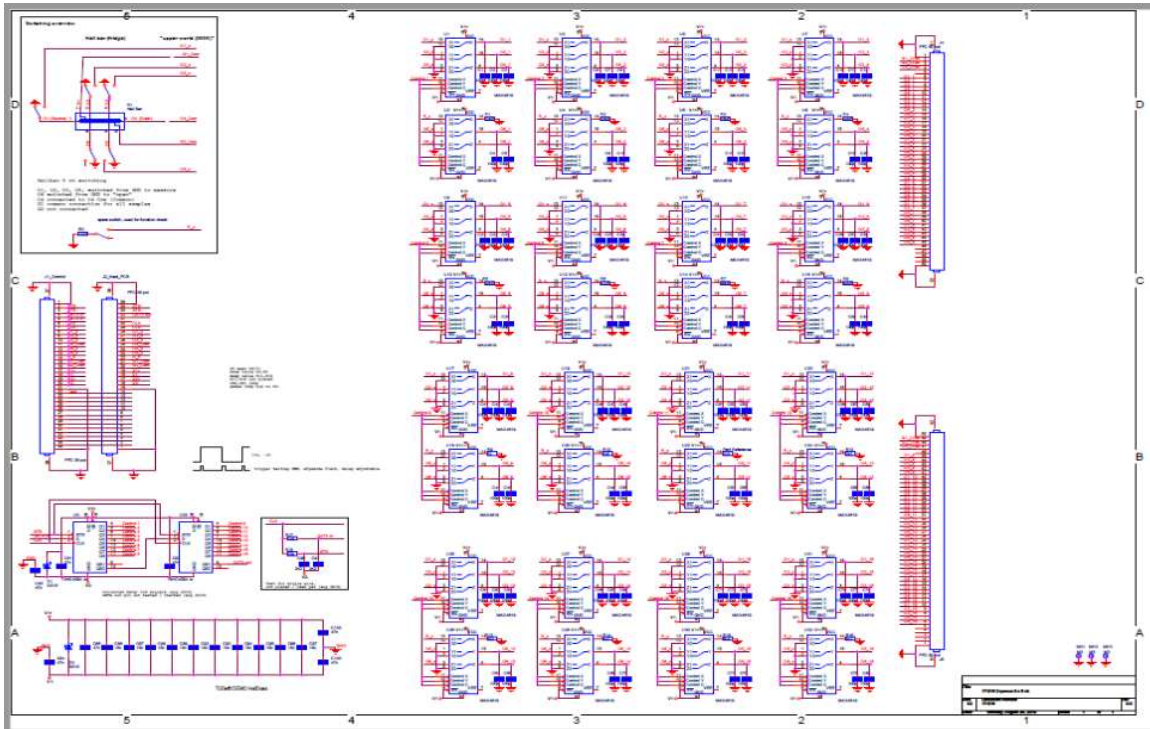
17-015 Sample board Zheng

Sample Board



17-016 Cryomux

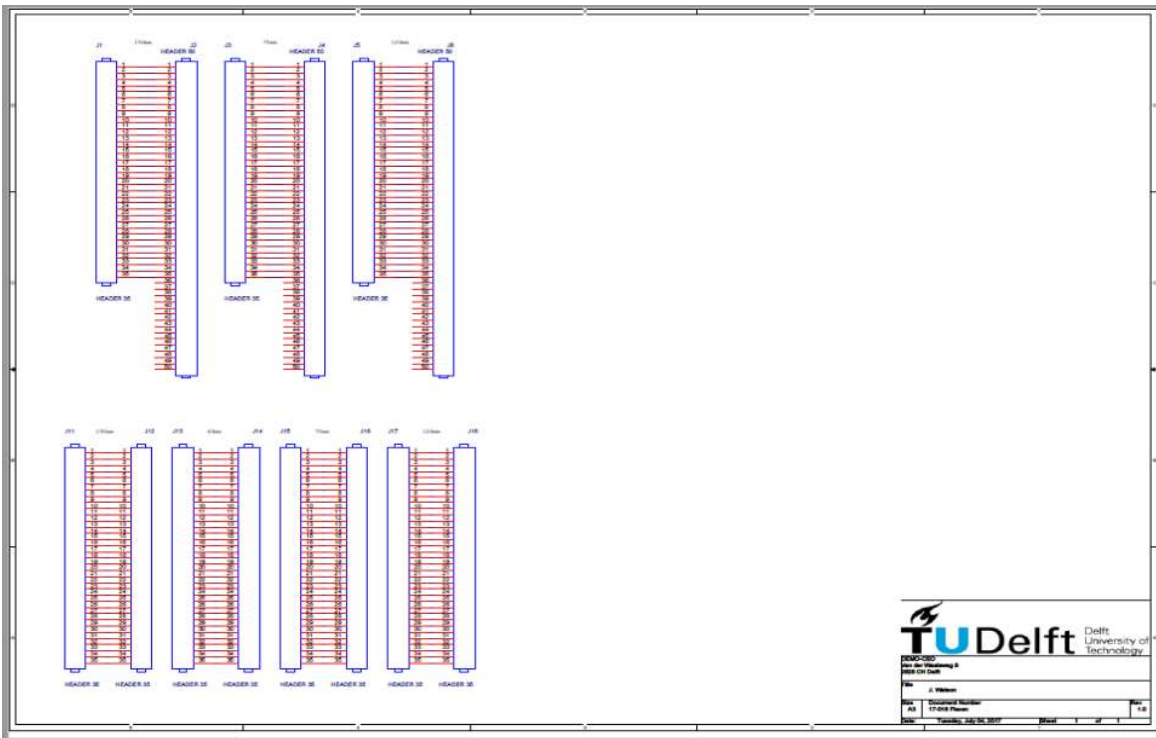
size (LxWxT): 53 x 35 x ? mm



17-018 FFC35_FFC50 flex

Interface

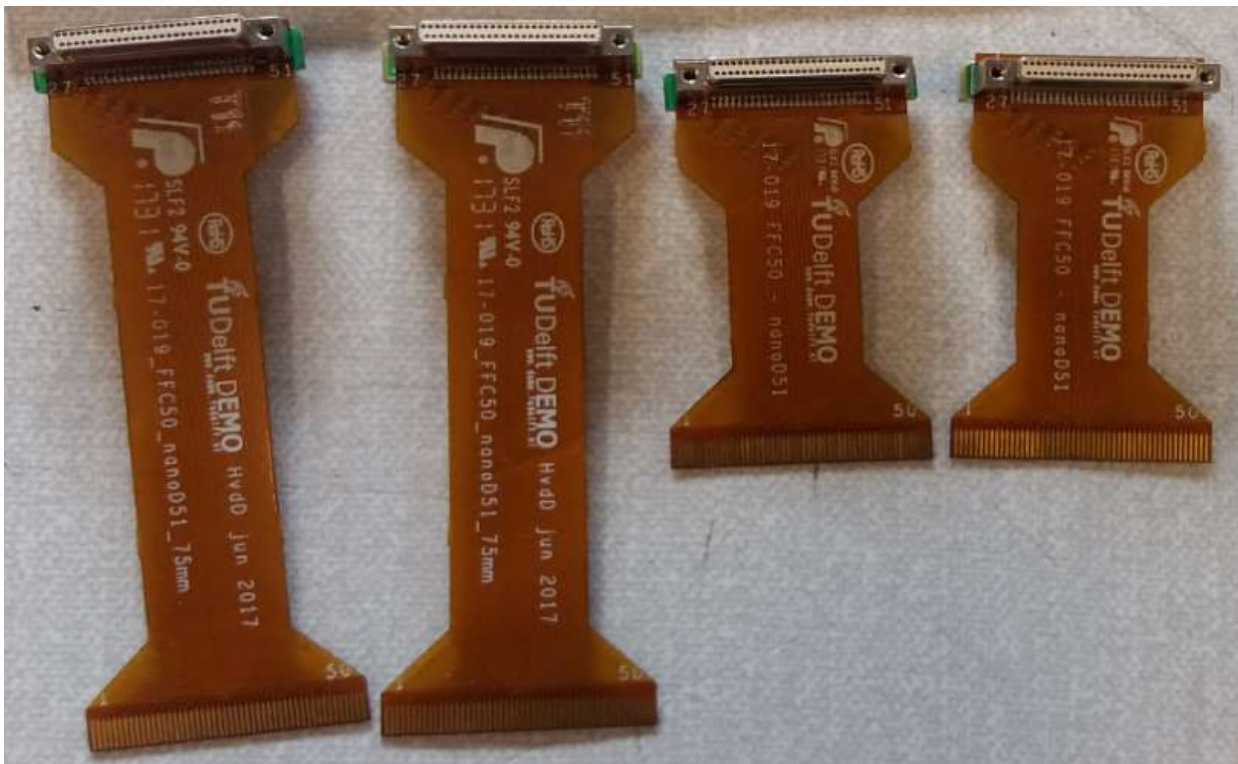
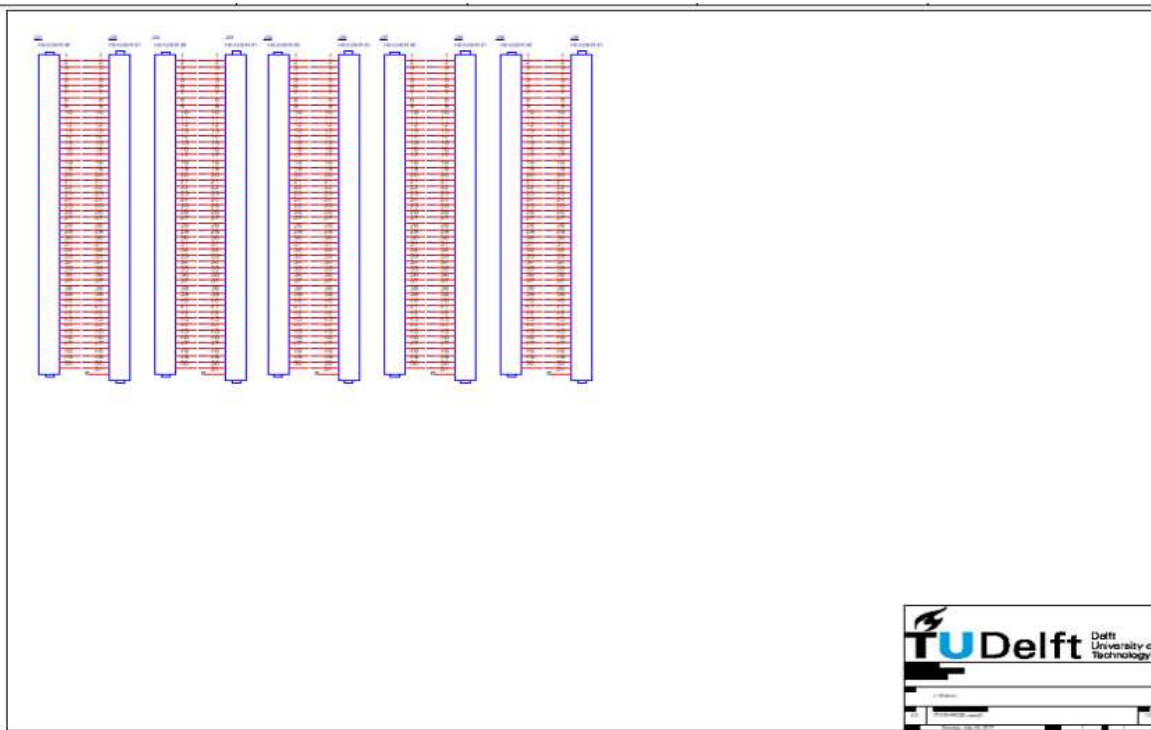
Different lengths: 20, 46, 75, 120, 150mm



17-019 FFC50_nanoD flex

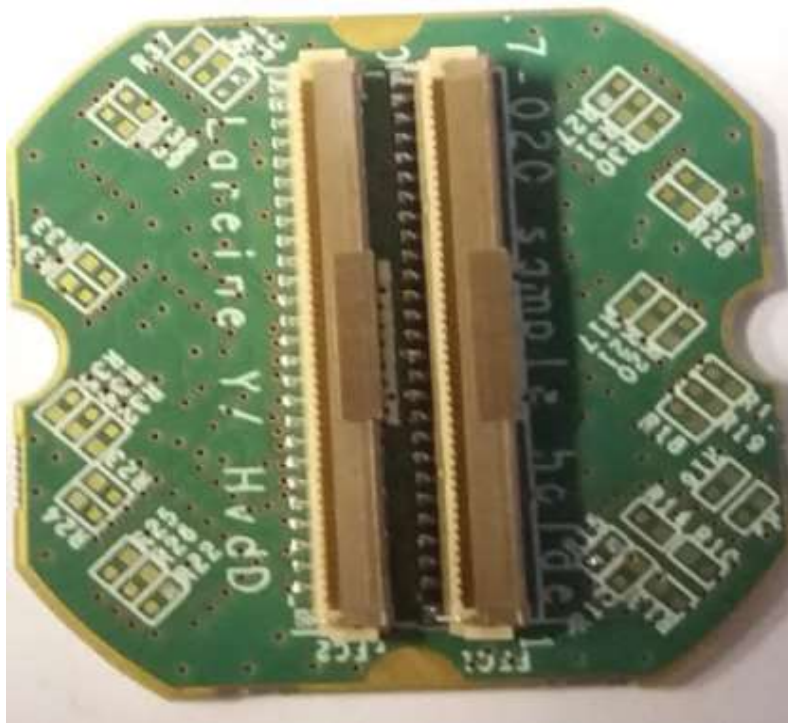
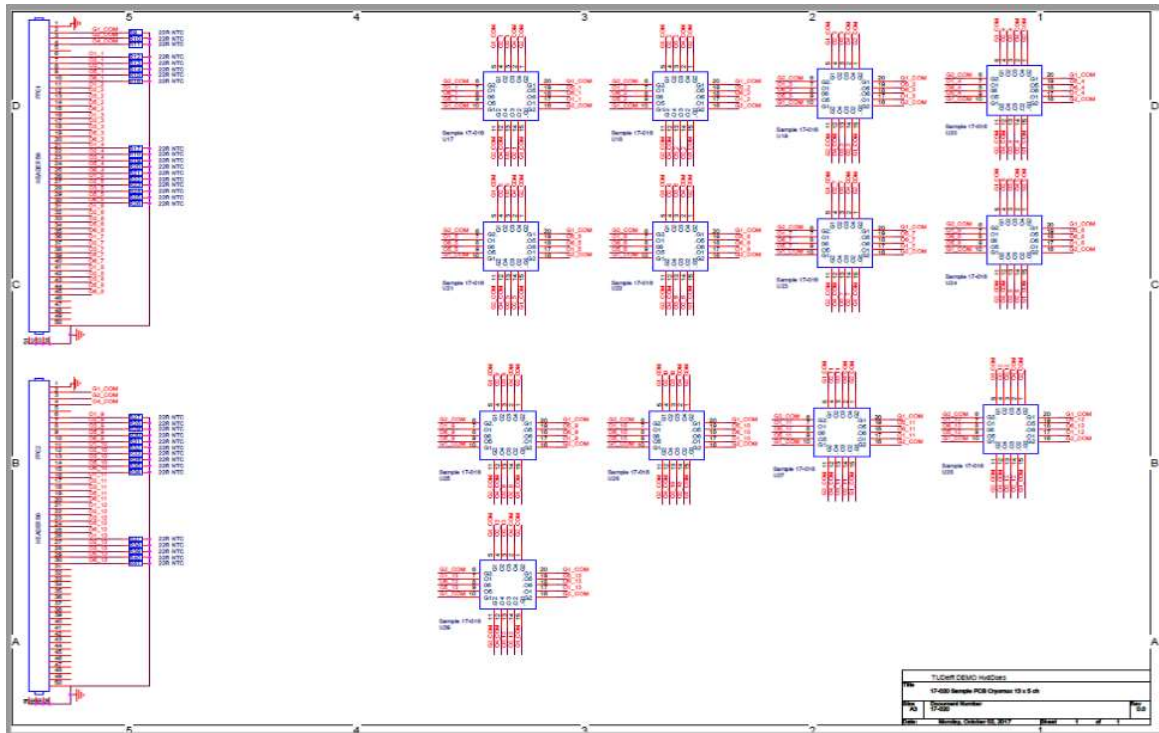
Interface (only male type nanoD)

Different lengths: 20, 46, 75, 120, 150mm



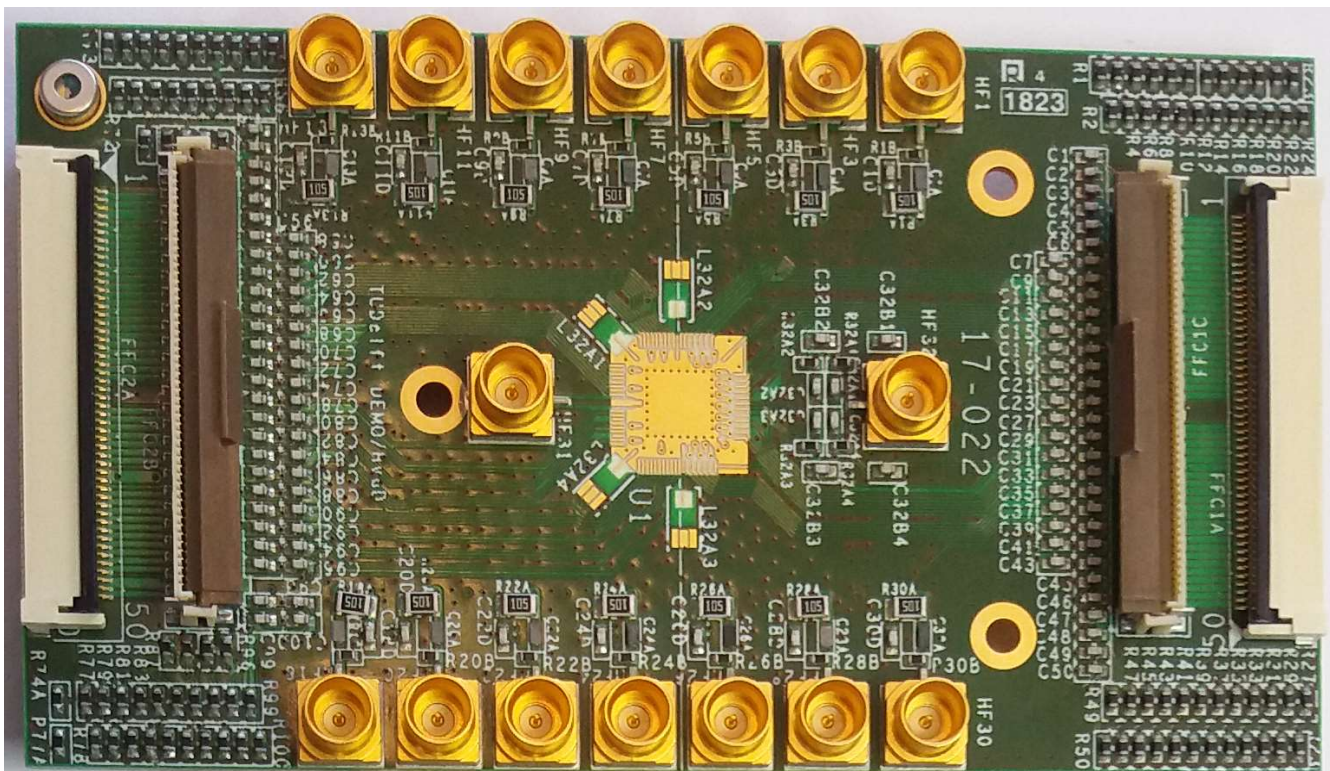
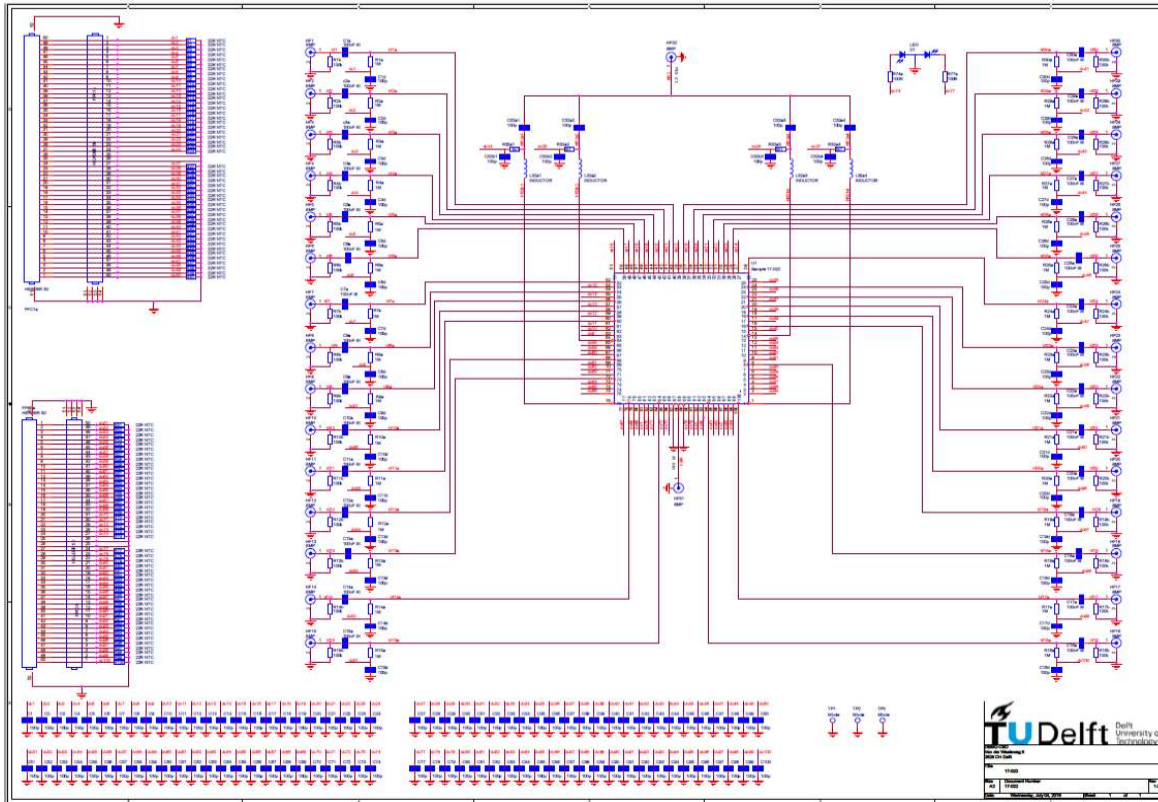
17-020 Sample board Cryomux Lareine Yeoh

size (LxWxT): 34 x 34 x ? mm



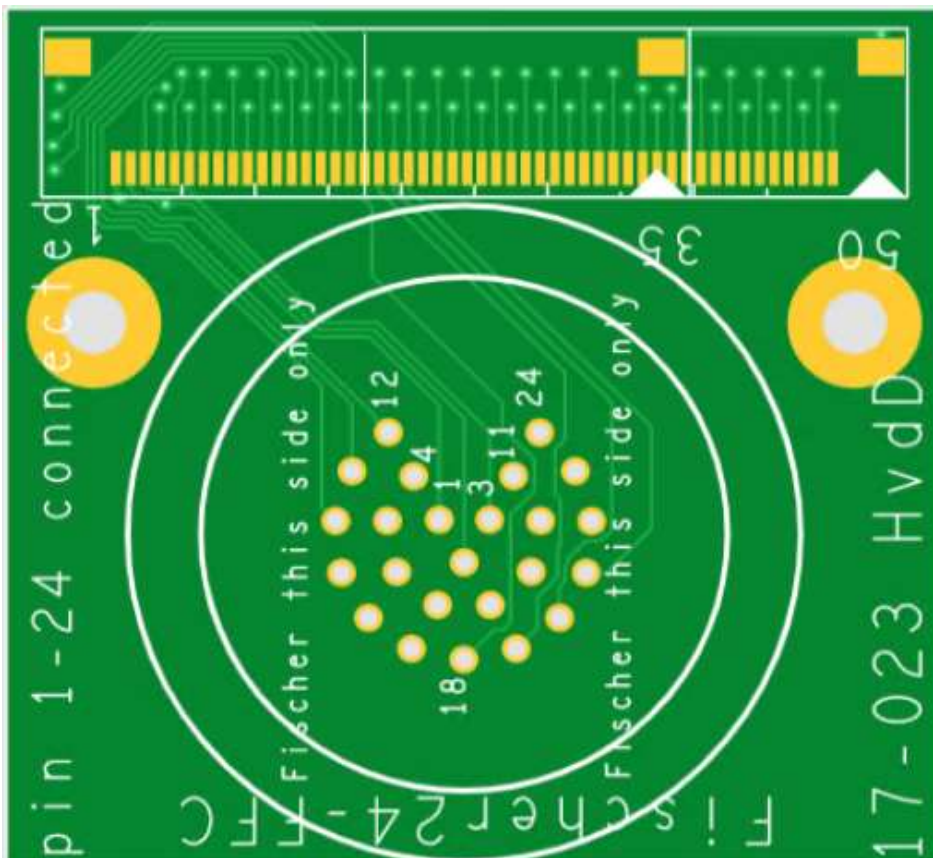
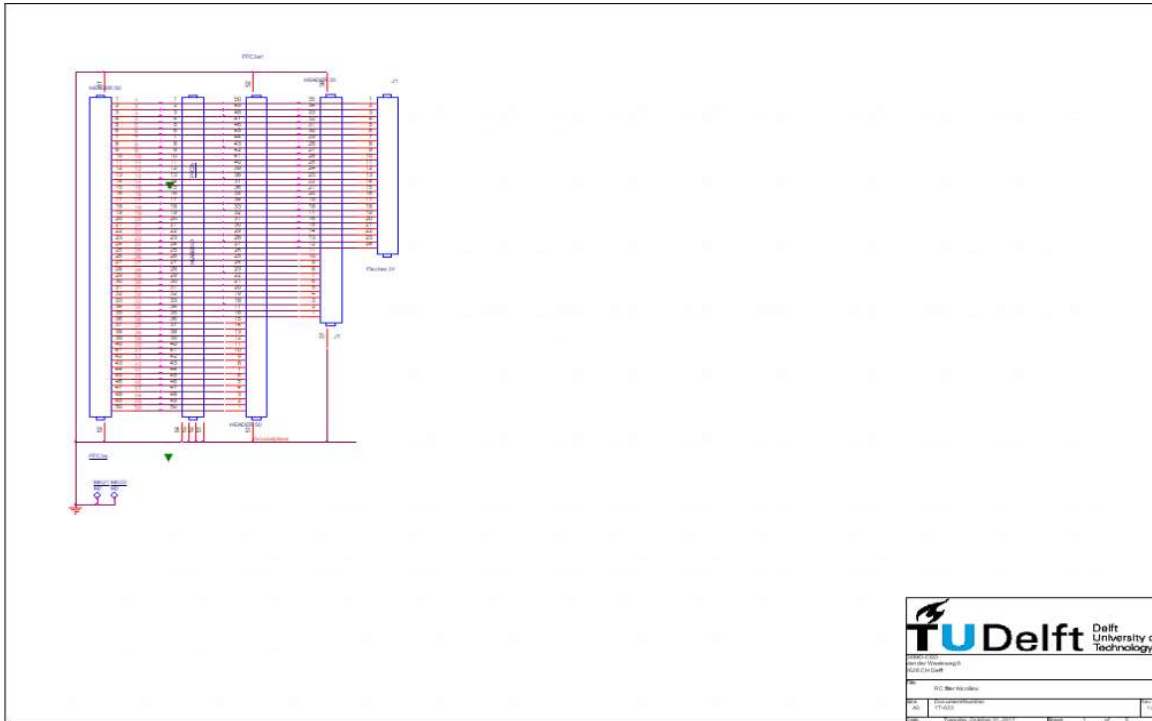
17-022 Uni Sample PCB 23 gate

size (LxWxT): 80 x 45 x ? mm



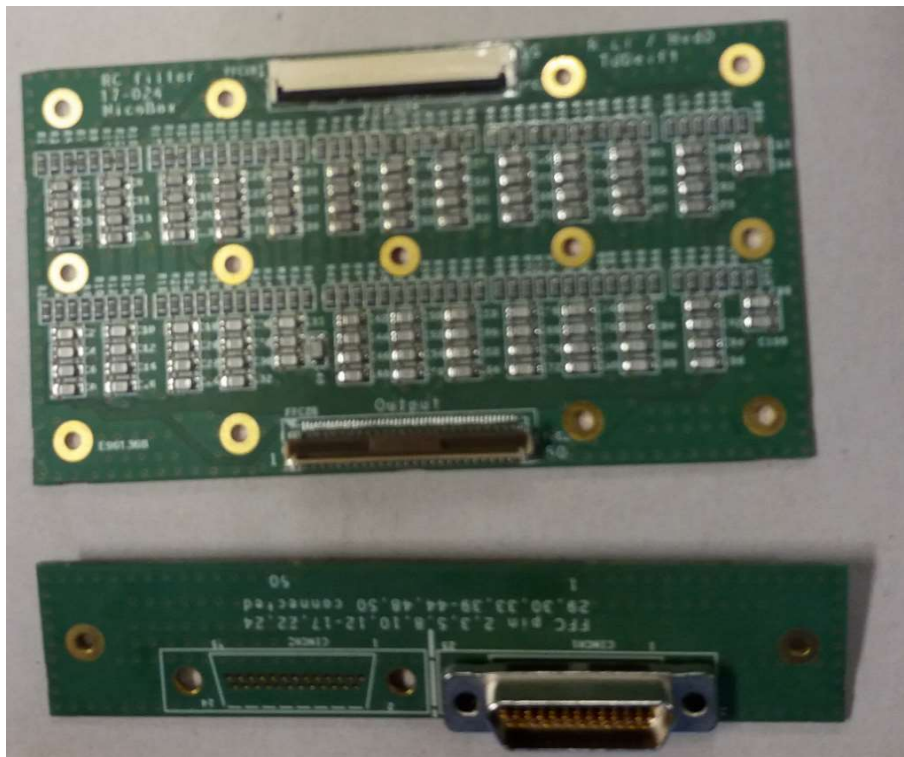
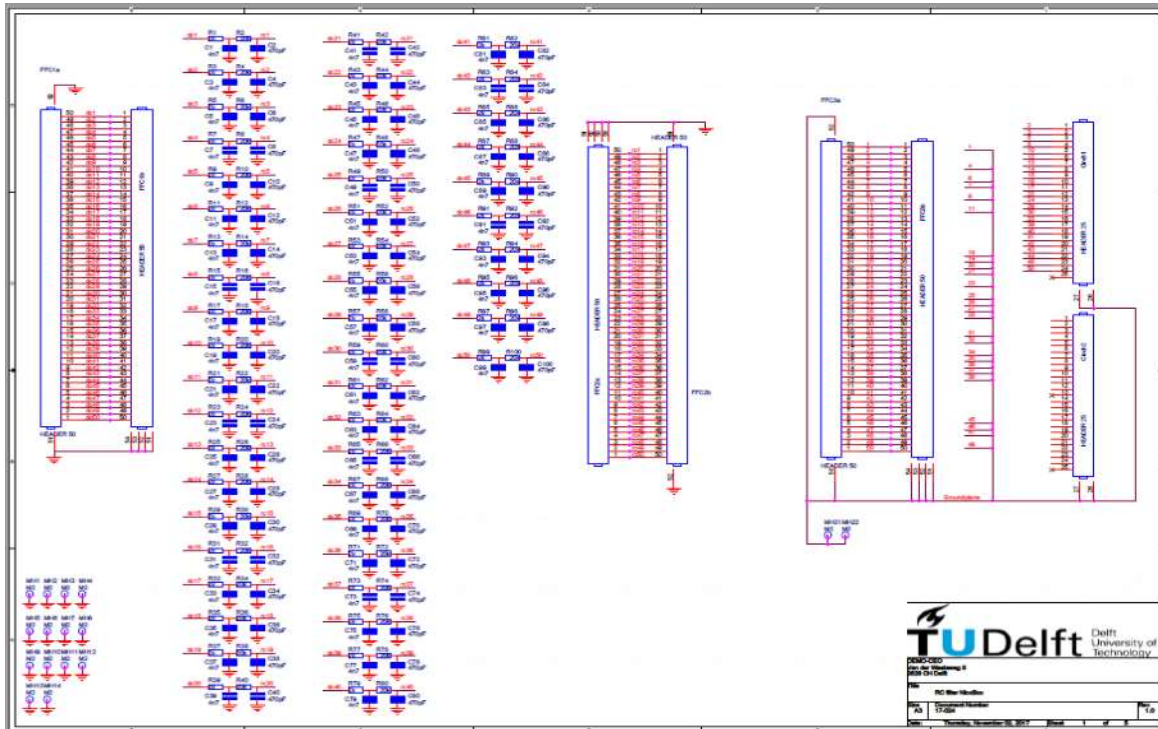
17-023 Fischer24-FFC

size (LxWxT) 32x 30 x ? mm



17-024 RC filter Nico Box

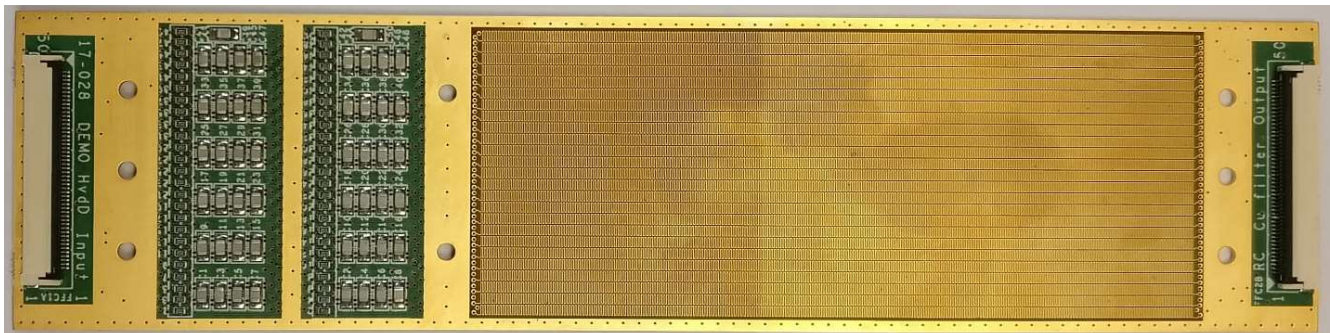
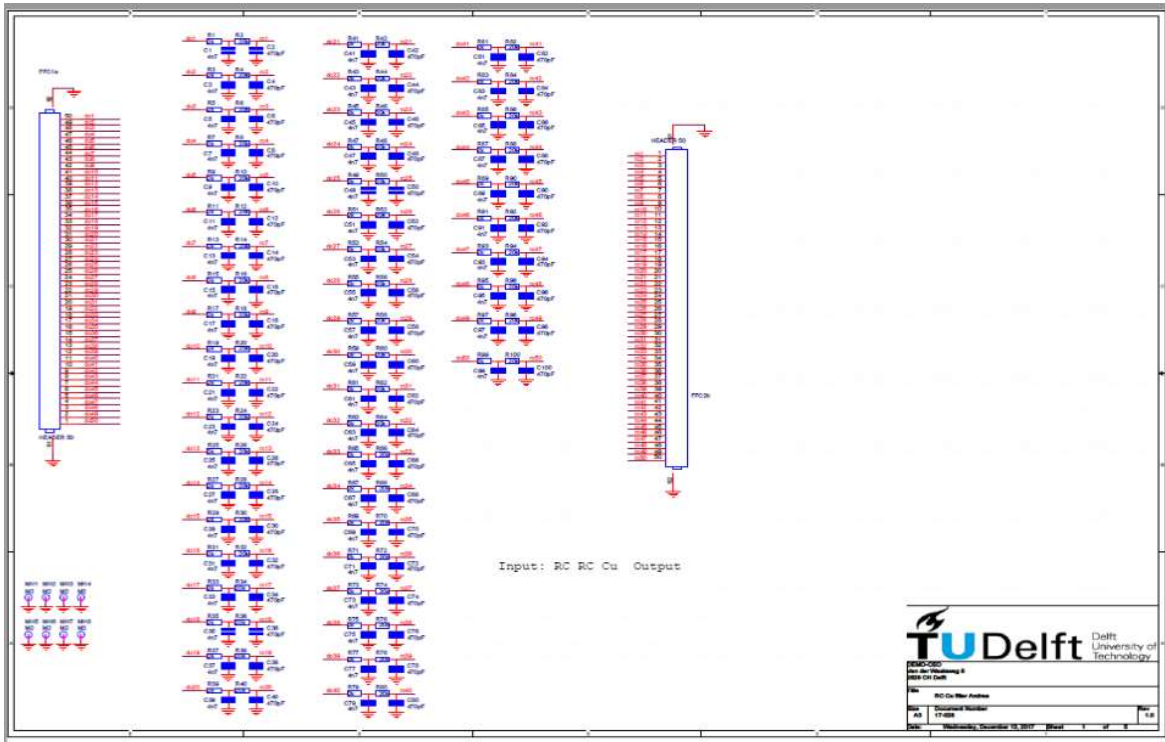
size (LxWxT): 90 x 50 x ? mm



17-028 RC-Cu filter Andrea Corna

Filter

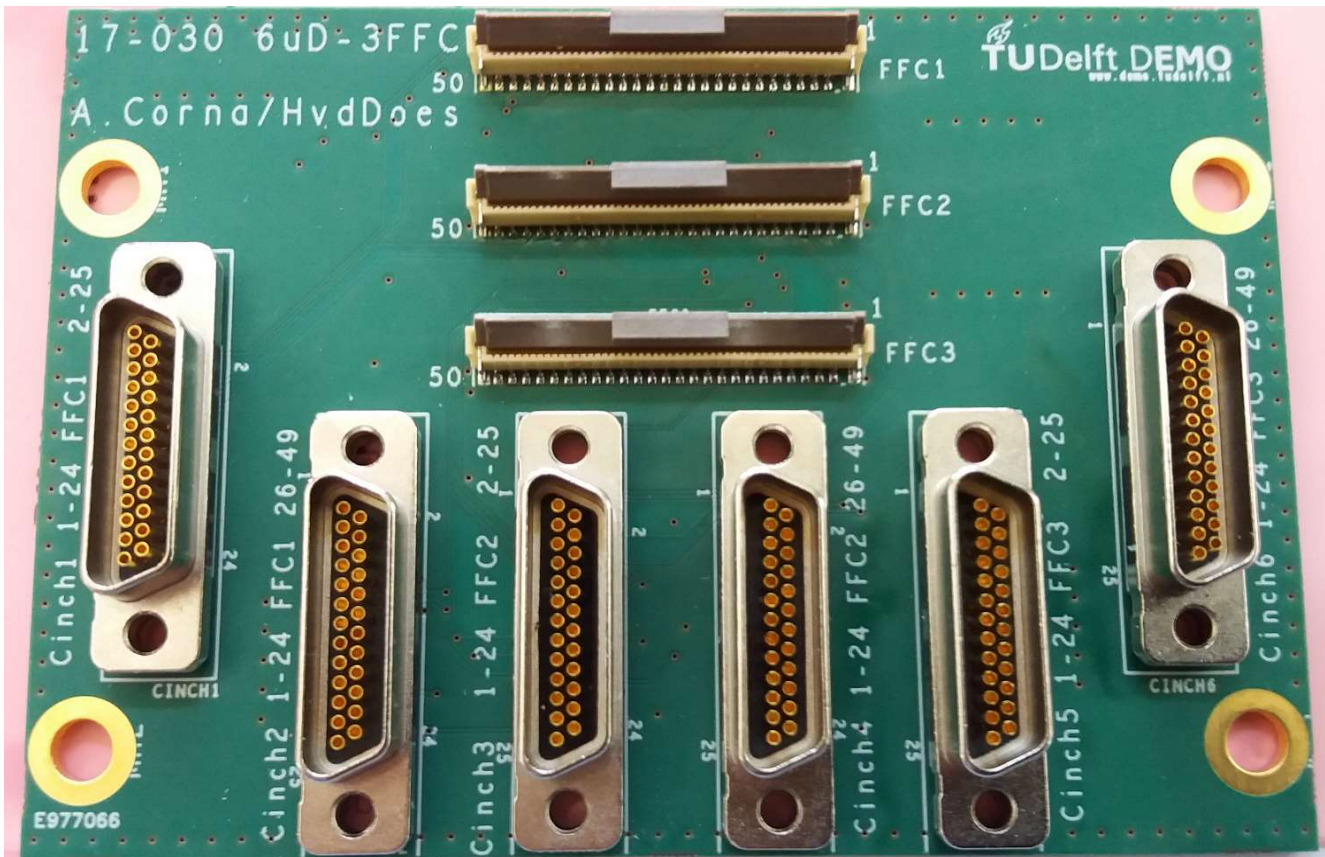
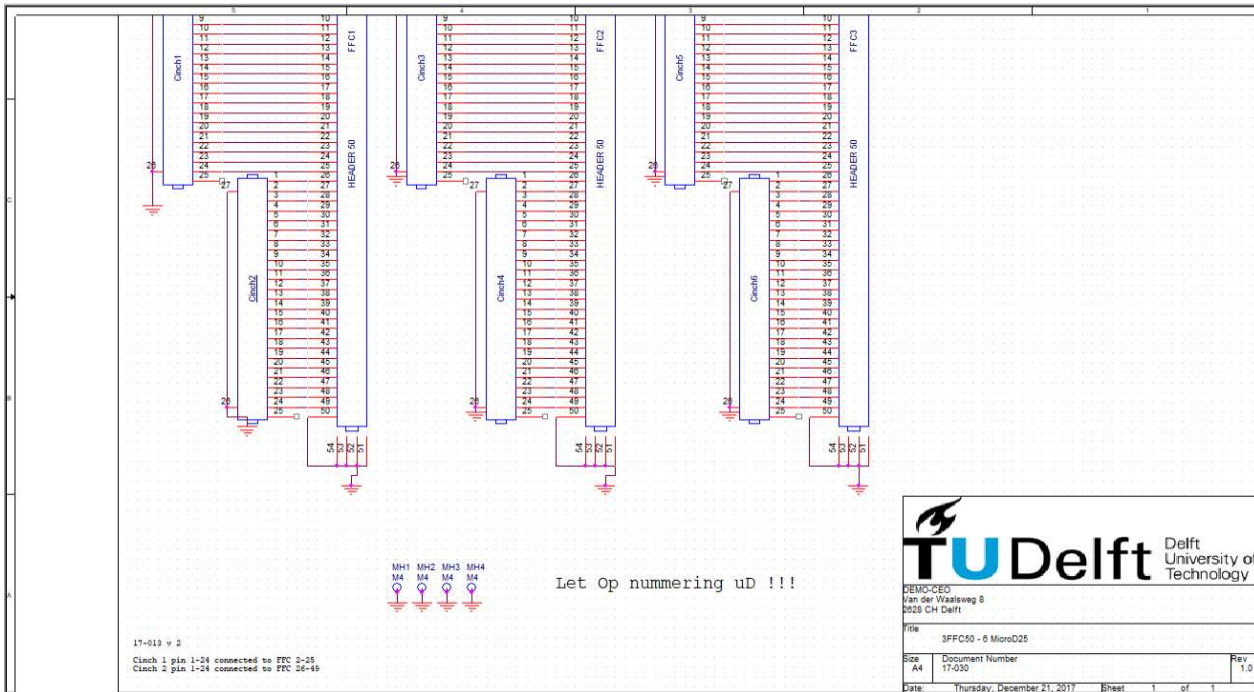
size (LxWxT): 166 x 40 x ? mm



17-030 3FFC50-6MicroD Andrea Corna

Interface

size (LxWxT): 88 x 61.5 x ? mm



17-031 FFC50-FFC50 Flexen

Different length: 20, 25, 40, 70, 90, 120, 150, 200

